

49er, 49erFX and Nacra17

Lanzarote International Regatta

Lanzarote (Marina Rubicón)

19th to 26th March 2021

The Organising Authority is the Canary Islands Federation, Real Club Náutico Arrecife and Club Castillo del Águila in conjunction with the International 49er and Nacra 17 Class Associations

SAILING INSTRUCTIONS

[NP] denotes a rule that shall not be grounds for protests by a boat. This changes RRS 60.1(a).

[DP] denotes a rule for which the penalty is at the discretion of the International Jury.

[SP] denotes a rule for which a standard penalty may be applied by the race committee without a hearing or a discretionary penalty applied by the International Jury with a hearing

1. RULES

- 1.1 The regatta will be governed by the rules as defined in *The Racing Rules of Sailing*.
- 1.2 RRS Appendix P, *Special Procedures for Rule 42*, will apply
- 1.3 For the Medal Race, World Sailing Addendum Q, takes precedence over any conflicting instructions.
- 1.4 No National Authority prescriptions will apply.
- 1.5 [DP] Penalties for breaches of RRS 41, the Class Rules or the Equipment Inspection Regulations are at the discretion of the International Jury.
- 1.6 For 49er and 49erFX - the bottom two panels of the jib area shall be restricted to Class and Event advertising and all competitors shall place class nominated branding on their jibs according to the World Sailing approved 49er Class jib advertising policy.
For Nacra 17 - the area of the jib, except for the visibility window, shall be restricted to Class and Event advertising and all competitors shall place class nominated branding on their jibs according to the World Sailing approved Nacra 17 Class jib advertising policy.

- 1.7 If there is a conflict between languages, the English text will take precedence.
- 2. IDENTIFICATION [DP][NP][SP]**
- 2.1 Boats may be required to display the stickers provided by the Organising Authority on both sides of the forward 25% of the hull, 200mm from the bow. Boats shall affix the stickers in accordance with any instructions given by the Organising Authority.
- 2.2 [SP] Provided two or more Qualifying races have been completed, from Monday 22 March onwards, each day while racing, the sailors of the first, second and third boats in series ranking at the beginning of the day shall wear yellow, blue and red lycra bibs respectively. These bibs will be available at the Race Office each day from two hours before the first scheduled warning signal of the day and shall be returned by competitors as soon as possible after the day's racing.
- 3. CAMERAS AND ELECTRONIC EQUIPMENT [NP]**
- 3.1 Boats may be required to carry on board cameras, sound equipment or positioning equipment as specified by the Organising Authority. Corrector weights may be required for boats without cameras. Competitors may also use their own camera recording equipment and attachments, but these are to be removable for weighing. A boat shall not be given redress based on a claim involving this equipment. This changes RRS 62.1
- 3.2 [DP][SP][NP] The Organising Authority may supply GPS tracking units for use during the Qualifying Series, the Final Series and the Medal Races. Boats shall carry these GPS units whilst racing. The GPS units shall be picked up every morning from the Race Office before going afloat and shall be returned to the Race Office no later than the end of protest time.
- 3.3 No competitor or support team shall use a drone over the racing area.
- 4. NOTICES TO COMPETITORS**
Notices to competitors will be posted online on the event website www.lanzarotewinterseries.com
- 5. CHANGES TO SAILING INSTRUCTIONS.**
Any change to the sailing instructions will be posted not less than two hours before the scheduled warning signal on the day it will take effect, except that any change to the timing of races, will be posted by 2000 the day before it will take effect.
- 6. SIGNALS MADE ASHORE**
- 6.1 Signals made ashore will be displayed at the official flagpole located close to the main ramp.
- 6.2 [DP][NP][SP] Flag D displayed ashore with one sound signal means: "the warning signal will be made not less than 45 minutes after flag D is displayed or not before the scheduled time. Boats shall not leave their allocated berth until this signal is made".

7 SCHEDULE OF EVENTS

- | | | | |
|-----|----------------------------|--------------|--------------------------------|
| 7.1 | Friday 19 March | 0930 – 1800 | Registration/Inspection |
| | Day 0 - Saturday 20 March | 0930 – 1330 | Registration/Inspection |
| | | 1500 | Practice Races |
| | | 1730 | Coaches' Briefing |
| | Day 1 – Sunday 21 March | 1100 | Qualifying/Single Series Races |
| | Day 2 - Monday 22 March | 1100 | Qualifying/Single Series Races |
| | Day 3 - Tuesday 23 March | 1100 | Qualifying/Single Series Races |
| | Day 4 - Wednesday 24 March | 1100 | Final/Single Series Races |
| | Day 5 - Thursday 25 March | 1100 | Final/Single Series Races |
| | Day 6 - Friday 26 March | 1000 | Final/Single Series Races |
| | | 1300 | Medal Races |
| | | After racing | Prize Giving |
- 7.2 On Friday 26 March there will be no warning signal after 1400 for the boats taking part in the final Opening Series Races and after 1500 for those taking part in the Medal Races.
- 7.3 There will be a coaches' briefing at 0900 on each racing day
- 7.4 The link to the online briefing is <https://us02web.zoom.us/j/7938433826>

8. FORMAT OF RACING - QUALIFYING SERIES, FINAL SERIES AND MEDAL RACES

The regatta will consist of an Opening Series and a Medal Race.

For 49er and 49er FX - The Opening Series will be divided into a Qualifying Series and a Final Series.

For Nacra 17 - The Opening Series will be a Single Series

The format is described in Attachment C. The provisional racing schedule is described in Attachment D.

9. CLASS FLAGS

- 9.1 In the Qualifying Series, for 49er the class flag will be the class insignia on a background of the colour of the respective fleet, yellow and blue and for 49erFX the class insignia on a background of yellow or blue.
- 9.2 In the Final Series, the class flags will be the 49er class insignia on a background of yellow (gold fleet), blue (silver fleet) and for 49erFX the class insignia on a background of yellow (gold fleet) and blue (silver fleet).
- 9.3 For Nacra 17 the class flag will be the class insignia on a background of yellow.
- 9.4 In the Medal Races, the class flags will be the class insignia on a background of yellow.

10. RACING AREAS

- 10.1 Attachment B shows the location of the race areas.
- 10.2 The provisional race schedule including the time of the first warning signal and assignment of fleets to racing areas will be as per Attachment D. Any change to racing areas will be posted before flag D is displayed, see SI 6.2.
- 10.3 [DP][NP] Boats not racing shall not sail in a course area being used by another fleet.

11. THE COURSES

- 11.1 Attachment A shows the course to be sailed, the order in which the marks are to be passed, the side on which each mark is to be left, and the signals indicating the number of rounds to be sailed.
- 11.2 No later than the warning signal, the race committee signal vessel will display the approximate compass bearing from the race committee signal vessel to mark 1.
- 11.3 There will be a gate at the leeward marks and Nacra 17 will have a spreader mark at the windward mark.
- 11.4 A gate may be replaced by a single mark to be left to port

12. MARKS

Course A

Marks 1 and 2S/P Orange cone
Change mark Green cone

Course B

Marks 1 and 2S/P Yellow cone
Change mark Red cone

Course C

Marks 1, 1A and 2S/P Red cone
Change mark Yellow cone

Starting marks Race Committee vessels
Finishing marks Main Race Committee vessel
With either a race committee vessel or a yellow mark

13. START

- 13.1 [DP][NP] Boats whose warning signal has not been made shall avoid the starting area.
- 13.2 A boat starting later than four minutes after her starting signal will be scored Did Not Start. This changes RRS A4 and A5.
- 13.3 To alert boats that a race or sequence of races will begin soon, the orange starting line flag will be displayed with one sound signal not less than two minutes before a warning signal is displayed.

14. CHANGE OF THE NEXT LEG OF THE COURSE

- 14.1 To change the next leg of the course, the race committee will lay a new mark and remove the original mark as soon as practicable.
- 14.2 For Nacra 17 only - if the windward mark is changed a new spreader mark will not be laid.

15. THE FINISH

- 15.1 The finishing line will be between a staff displaying a blue flag on the port end and either a staff displaying a blue flag or the finishing mark on the starboard end.
- 15.2 For Nacra 17 only - [DP][SP] When the blue finishing flag is displayed, no boats shall enter the Finishing Exclusion Zone other than boats that are finishing, who shall then leave the zone as soon as reasonably possible. See Attachment E.

16. TIME LIMITS

- 16.1 For the Qualifying Series and Final Series the time limits and target times are as follows:
Time limit.....45 minutes
Finish window.....15 minutes
For Nacra 17, in winds averaging less than 10 knots, the Finishing window is increased to 20 minutes
Target time.....30 minutes or as described in Appendix C
- 16.2 For the Medal Races the time limits and target times are as follows:
Time limit.....30 minutes
Finish window.....10 minutes
Target time.....20 minutes
- 16.3 The Finishing Window is the time for boats to finish after the first boat starts, sails the course and finishes. Boats failing to finish within the Finish Window will be scored Did Not Finish without a hearing. This changes RRS 35, A5.1 and A5.2.

17. PENALTY SYSTEM

- 17.1 Appendix P, Special Procedures for Rule 42 will apply, as changed by SI 17.2
- 17.2 RRS 44.1 and RSS P2.1 are changed so that the Two-Turns penalty is replaced by the One-Turn penalty.
- 17.3 Penalties for breaches of NOR 18 (Insurance), NOR 20 (Media Rights), RRS 41, the Equipment Regulations, the Class Rules and rules in the Notice of Race and Sailing Instructions marked [DP], are at the discretion of the International Jury.
- 17.4 Breaches of rules in the SIs marked [NP] will not be grounds for a protest by a boat. This changes RRS 60.1(a).
- 17.5 For breaches of the SIs marked [SP], the race committee may apply a standard penalty without a hearing. A list of these breaches and the associated standard penalties will be posted on the Official Notice Board. However, the race committee may protest a boat when they consider the standard penalty to be inappropriate. A boat that has been penalised with a standard penalty can neither be protested for the same incident by another boat nor can another boat request redress for this race committee action. This changes RRS 60.1, 63.1 and Appendix A5.

18. HEARING REQUESTS

- 18.1 For each fleet, the protest time limit is 60 minutes after the last boat finishes the last race of the day or the race committee signals no more racing today, whichever is later. The time will be posted on the official notice board.
- 18.2 Hearing request forms are available [here](#) or on the event website.
- 18.3 Notices will be posted no later than 30 minutes after the protest time limit to inform competitors of hearings in which they are parties or named as witnesses. Hearings will be held in jury room at the main building, first floor.
- 18.4 A list of boats that have been penalised for breaking RRS 42 under Appendix P will be posted [here](#).
- 18.5 For the purposes of RRS 64.4(b) the 'authority responsible' is the Technical Committee appointed by the Organising Authority.
- 18.6 RRS 66.2 (a) will apply on the last scheduled day of racing of each series.
- 18.7 The time limit for requests under RRS N1.4(b) is 5 minutes after a party is informed of a decision.

19. INTERNATIONAL JURY

Decisions of the International Jury will be final as provided in RRS 70.5

20. SCORING

20.1 The low point scoring system of Appendix A, as changed below, will apply.

20.2 Five races are required to be completed to constitute an event.

20.3 When less than four races have been completed, a boat's overall score shall be the sum of her race scores.

20.4 When four or more races have been completed, a boat's overall score shall be the total of her race scores excluding her worst score.

20.5 RRS A5.2 is changed so that a boat that did not *start*, did not *sail the course*, did not *finish*, retired or was disqualified shall be scored points for the finishing place one more than the number of boats in the largest group.

20.6 Final Series fleets need not have completed the same number of races.

20.7 Opening series score (The Qualifying Series score plus the Final Series score in case of dividing into fleets) will be the overall points for the Championship except for boats competing in the Medal Race

20.8 The boats in the Gold Fleet will be ranked above the boats in the Silver Fleet if applicable.

20.9 The points for each boat carried forward into the Medal Race will be as SI 20.7 after the Final Series/Opening series.

20.10 The boats competing in the Medal Race will be placed 1st to 10th based on their total scores. The remaining boats in the Gold, Silver and Bronze Fleets will then be placed based on their Opening Series score.

20.11 Medal Race

20.11.1 The Medal Race will be for the top 10 boats overall in the Opening Series.

20.11.2 The Medal Race score shall not be excluded.

20.11.3 For the Medal Race RRS A4 is changed so that the points are doubled.
See Attachment C for details.

20.12 Series Ties

20.12.1 In the Final Series, ties will be broken in accordance with RRS A8 using the Final Series scores.

20.12.2 In the Medal Race, ties will be broken by the Medal Race score. This changes RRS A8.

20.13 Scoring enquiries

To request correction of an alleged error in posted race or series results, a boat shall submit a completed scoring enquiry form, available [here](#) or on the event web site

21. [DP][SP] SAFETY

21.1 RRS 40.1 applies at all times while afloat, except briefly while changing or adjusting clothing or personal equipment.

21.2 [SP] Competitors shall sign out before going on the water and sign in as soon as reasonably possible but within the protest time limit upon returning ashore, at the desk located on the ramp.

21.3 Boats not leaving the shore for the day's races shall notify the race committee by email to eventosfcv@gmail.com as soon as reasonably possible.

21.4 A boat that retires from a race shall notify the race committee by email to eventosfcv@gmail.com as soon as reasonably possible.

21.5 The Race Committee radio channels for purpose of RRS 37 are:

- Area A 69
- Area B 72
- Area C 8

22. REPLACEMENT OF CREW OR EQUIPMENT

22.1 Replacement of helm or crew requires written approval of the PRO. Requests shall be made online at the first reasonable opportunity. The request form may be found [here](#) or on event web site.

22.2 Replacement of equipment requires written approval of the Technical Committee. Requests for replacement of equipment shall be made online at the first reasonable opportunity. The request form may be found [here](#) or on the event web site.

23. EQUIPMENT AND MEASUREMENT CHECKS

23.1 Some boats will be inspected for class rules compliance prior to racing. Boats shall be presented for measurement checks at the times prescribed in SI 7. List of boats to be inspected during Day Zero is posted on the event website. All boats shall comply with Equipment Regulations.

23.2 In addition, any boat or equipment may be checked for compliance with the class rules and sailing instructions at any time. On the water, a boat can be instructed by the Technical Committee to proceed immediately to a designated area for measurement checks.

23.3 Limitations of equipment

i) Only one set of sails shall be used during the regatta. The sails shall be presented and stamped during the initial inspection.

ii) For 49er and 49erFX only - Only one forestay shall be used during the regatta. The forestay will be tagged during the initial inspection.

23.4 All boats, when not afloat, shall be placed in the official dinghy park.

23.5 All boats shall comply with RRS 78.1 from 1300 on the day before their first scheduled race (hereinafter referred to as "Day Zero") onwards. Non-compliance from 1300 on Day Zero until the start of the first race shall be reported, protested and penalized as if it were discovered after racing on the first day on which races for that boat have been completed. This amends RRS 78.1

24. OFFICIAL BOATS

Official boats will be identified as follows:

Race committee boats..... Race area A: Pink flags
Race area B: White flags
Race area C: Green flags

Jury boats..... White flags with JURY

Technical Committee boats..... White flags with MEASURER

Media boats..... White flags with MEDIA

25. SUPPORT BOATS [DP][NP]

- 25.1 Team leaders, coaches and other support personnel shall not be in the area where boats are racing or within 100 metres of any boat racing from the time of the preparatory signal for the first fleet to start until all boats have finished or the race committee signals a postponement, general recall or abandonment. This SI does not apply during rescue operations.
- 25.2 At all times while on water, support boats shall display either their national flag on a staff with the top of the hoist minimum 1.5 m above water level or their national code letters (minimum height 200mm) on the outside of the hull or on the side of the outboard motor cover.
- 25.3 Support boats shall comply with the Class Support Boat Regulations.
- 25.4 Support boats that are motoring at more than 5 knots shall remain at least 150 metres from any boat that is racing.
- 25.5 All support boats are at all times submitted to the Organising Committee and Race Committee authority and must comply with any instructions given by these authorities.
- 25.6 The International Jury may direct the Organising Authority to revoke privileges from any boat or person found to be in breach of SI 25.
- 25.7 Support vessels shall always be on the outside of the media boats (away from the fleet side) so that the media boats can capture images without coach boats in the image. This does not apply during any safety incident.
- 25.8 Organising Authority may supply stickers for support boats. In this case it's mandatory to put the stickers as much visible as possible when afloat.

26. CODE OF CONDUCT [DP][NP]

Competitors shall comply with any reasonable request from a regatta official or a member of the Organising Authority.

27. TRASH DISPOSAL [DP][NP]

As sailors, we seek to protect and restore our oceans and coastal waters. Trash may be placed aboard support and race committee boats.

28. RADIO COMMUNICATION [DP][NP]

A boat shall neither make radio transmissions while racing nor receive radio communications not available to all boats. This restriction also applies to mobile telephones.

29. PRIZES

- 29.1 Prizes for the Event will be announced and awarded at the end of the Medal Races for First, second and third classified overall in each class
- 29.2 Other prizes may be awarded at the discretion of the Organising Authority

30. RISK STATEMENT

RRS 3 of the Racing Rules of Sailing states: "The responsibility for a boat's decision to participate in a race or to continue racing is hers alone."

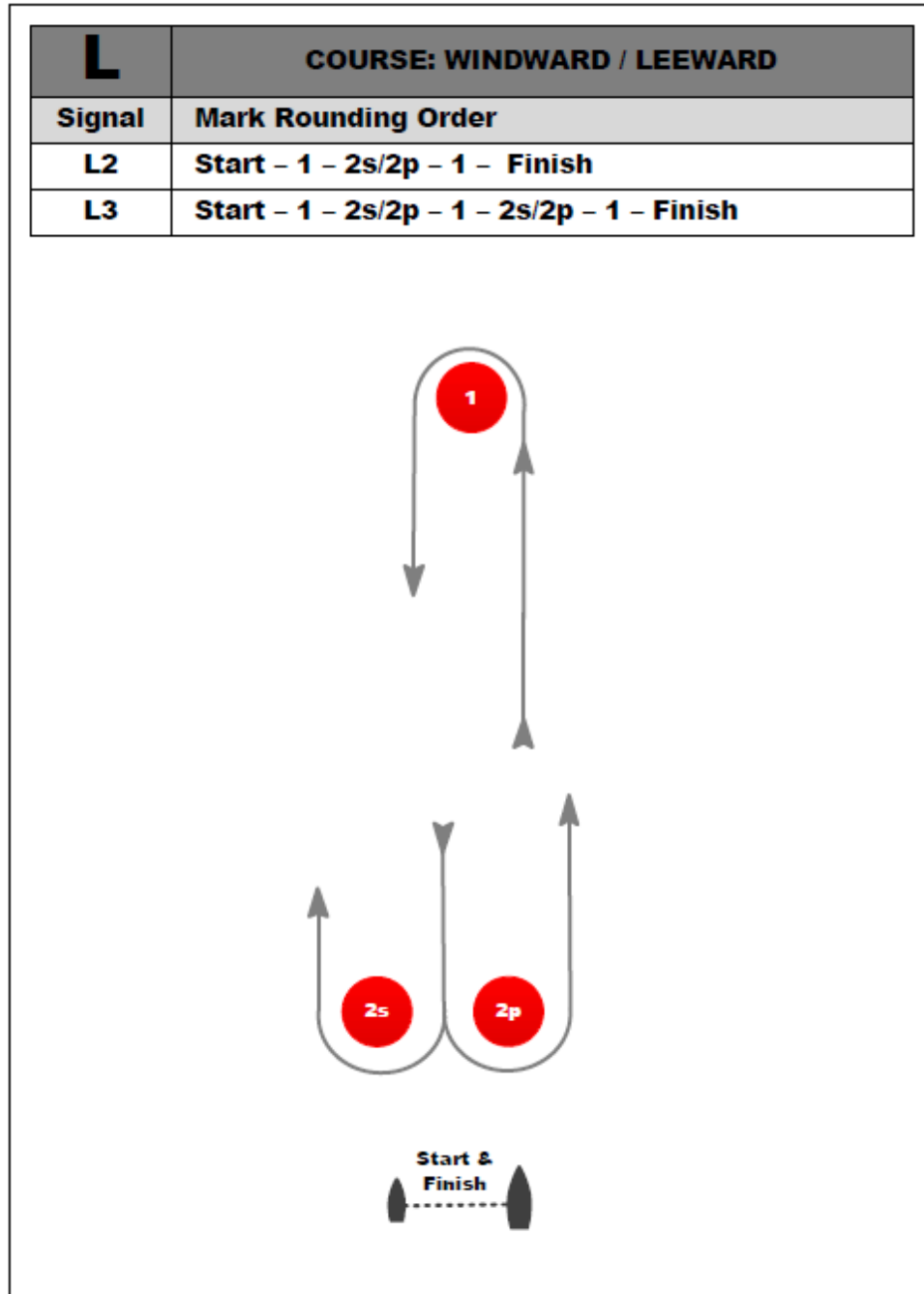
Sailing is by its nature an unpredictable sport and therefore inherently involves an element of risk. By taking part in the event, each competitor agrees and acknowledges that:

- a) They are aware of the inherent element of risk involved in the sport and accept responsibility for the exposure of themselves, their crew and their boat to such inherent risk whilst taking part in the event;
- b) They are responsible for the safety of themselves, their crew, their boat and their other property whether afloat or ashore;
- c) They accept responsibility for any injury, damage or loss to the extent caused by their own actions or omission;
- d) Their boat is in good order, equipped to sail in the event and they are fit to participate;
- e) The provision of a race management team, patrol boats and other officials and volunteers by the event organiser does not relieve them of their own responsibilities;
- f) The provision of patrol boat cover is limited to such assistance, particularly in extreme weather conditions, as can be practically provided in the circumstances.
- g) It is their responsibility to familiarise themselves with any risks specific to this venue or this event drawn to their attention in any rules and information produced for this event and to attend any competitors' briefing held for this event.

31. **INSURANCE [DP][NP]**

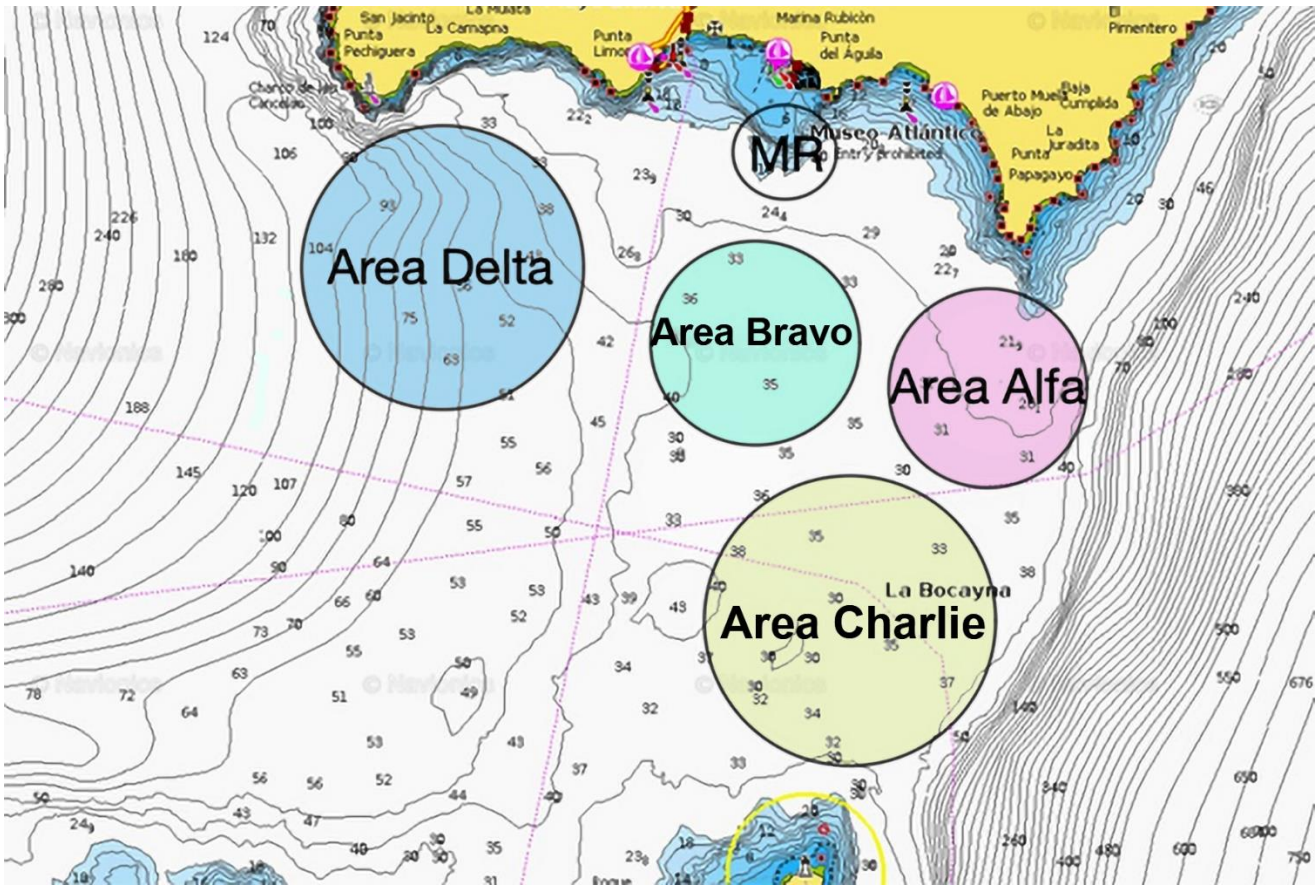
Each participating boat shall have valid third-party liability insurance with a minimum cover of at least EUR 1.500.000 (or equivalent) per incident.

ATTACHMENT A – COURSE DIAGRAM



LA	COURSE: WINDWARD / LEEWARD with spreader mark and leeward finish
Signal	Mark Rounding Order
LA2	Start - 1 - 1a - 2s/2p - 1 - 1a - Finish
LA3	Start - 1 - 1a - 2s/2p - 1 - 1a - 2s/2p - 1 - 1a - Finish
LA4	Start - 1 - 1a - 2s/2p - 1 - 1a - 2s/2p - 1 - 1a - 2s/2p - 1 - 1a - Finish

ATTACHMENT B – COURSE LOCATIONS



ATTACHMENT C – FORMAT OF RACING

For 49er and 49er FX

The Opening Series will be in two series:

1. Qualifying Series
2. Final Series

For Nacra 17

The Opening Series will be a Single Series

For 49er and 49erFX

1. Qualifying Series (Days 1, 2 and 3)

- 1.1 The boats will be split into TWO fleets for 49er and TWO fleets for 49erFX of approximately equal numbers of boats. The Qualifying Series will consist of a maximum of NINE races for 49er and NINE races for 49erFX. However, if less than SIX races have been completed by all fleets by the end of Day 3, the Qualifying Series will continue.
- 1.2 The Organising Authority will make initial fleet assignments on the basis of the top 50 ranked boats from the 2019 Worlds, with the remainder being taken in numerical order of sail numbers. The method of assignment to fleets will be as per 1.3 below. The ranking will remain in force until the end of the day during which the 2nd Qualifying Race is completed by all fleets.
- 1.3 If all fleets have completed the same number of races, boats will be reassigned to fleets on the basis of their Qualifying Series scores as detailed below. If all fleets have not completed the same number of races by the end of a day, the fleets with fewer races will continue racing the following day until all fleets have completed the same number of races. However, the reassignments will be calculated for those races, numbered in order of completion, completed by all fleets. Reassignments will be made as follows:

<u>Place in Qualifying Series</u>	<u>Fleet assignment</u>
First	Yellow
Second	Blue
Third	Blue
Fourth	Yellow
and so on	

Fleet assignments will be based on the ranking available at 2000 that day regardless of protests or requests for redress not yet decided. However at the end of the Qualifying Series, the fleet assignments will be made no later than 0700 on the day they take effect.

2. Final Series and Medal Race (Days 4, 5 and 6)

- 2.1 The Final Series will consist of a maximum of SEVEN races for 49er and SEVEN races for 49erFX.

- 2.2 For 49er the top 25 boats and 49erFX the top 25 boats based on their Qualifying Series scores after Day 3 will race in the Gold fleet (unless the Qualifying Series has been extended under section 1.1 above).
- 2.3 The remaining boats will race in the Silver fleet.
- 2.4 Days 4 and 5 THREE races are scheduled per day for each fleet.
- 2.5 Day 6 ONE race is scheduled for each fleet plus the Medal Race
- 2.6 On Friday, 26 March there will be no warning signal for the Final Series after 1400 and no warning for the Medal Race after 1500.

For Nacra 17

3. Single Series and Medal Race (Days 1 to 6)

- 3.1 The boats will race in a Single Fleet. The Opening Series will consist of a maximum of SIXTEEN races
- 3.2 Days 1 to 5 THREE races are scheduled per day
- 3.3 Day 6 ONE race is scheduled plus the Medal Race
- 3.4 On Friday, 26 March there will be no warning signal for the Opening Series after 1400 and no warning for the Medal Race after 1500

ATTACHMENT D – PROVISIONAL RACING SCHEDULE

2021 European Qualifier - Lanzarote			
Warning signal			
Day 0 – 20 March	Course A	Course B	Nacra course C
Practice			
15:00	49er	49erFX	Nacra
Day 1 – 21 March	Course A	Course B	Nacra course C
Qualifying			
11:00	49er 3 races	49er 3 races	
11:30			Nacra 3 races
Not Before 13:00	49erFX 3 races	49erFX 3 races	
Day 2 – 22 March	Course A	Course B	Nacra course C
Qualifying			
11:00	49erFX 3 races	49erFX 3 races	
11:30			Nacra 3 races
Not Before 13:00	49er 3 races	49er 3 races	
Day 3 – 23 March	Course A	Course B	Nacra course C
Qualifying			
11:00	49er 3 races	49er 3 races	
11:30			Nacra 3 races
Not Before 13:00	49erFX 3 races	49erFX 3 races	
Day 4 – 24 March	49erFX course A	49er course B	Nacra course C
Final Series			
11:00	49erFX Silver 3 races	49er Silver 3 races	
11:30			Nacra 3 races
Not Before 13:00	49erFX Gold 3 races	49er Gold 3 races	
Day 5 – 25 March	49erFX course A	49er course B	Nacra course C
Final Series			
11:00	49erFX Silver 3 races	49er Silver 3 races	
11:30			Nacra 3 races
Not Before 13:00	49erFX Gold 3 races	49er Gold 3 races	
Day 6 – 26 March	49erFX course A	49er course B	Nacra course C
Final Series			
10:00	49erFX Gold 1 race	49er Gold 1 race	Nacra 1 race
Not before 11:00	49er Silver 1 race		49erFX Silver 1 race
Not before 13:00		49erFX Medal Race	
Not before 13:30		49er Medal Race	
Not before 14:00		Nacra Medal Race	

ATTACHMENT E – FINISHING EXCLUSION ZONE

